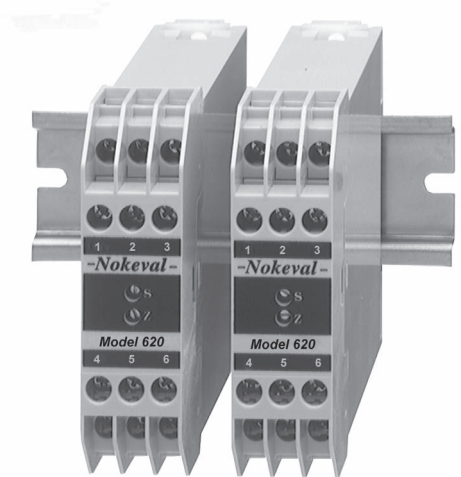


2-wire temperature transmitter 620S for Pt100 sensors

- Input range -200...+700°C
- High accuracy ± 0.05 % of span
- Leadwire compensation up to 100 ohms
- Linearization
- Small case 22.5 mm
- Mounting on DIN-rail



Our model 620S temperature transmitter is designed to meet the most exacting temperature measuring requirements. Extreme accuracy is obtained by linearizing the measurement signal with an accuracy of 0.05 % to the temperature. Thus one transmitter can now replace several of narrower range without reducing accuracy. Leadwire resistance automatic compensation up to 50

ohms makes possible long transfer distances with small-crossarea signal cables. Range can easily be varied by changing the range resistors located under the front plate. Normally transmitters are delivered calibrated according to customer range requirements.

Specifications:

Input	Pt100 according to DIN 43760
Accuracy	± 0.05 % of span
Linearizing accuracy	± 0.05 % of span
Ambient temperature effect	
- Span <100°C	± 0.01 %/°C
- Span >100°C	± 0.005 %/°C
Supply voltage effect	± 0.005 %/V
Repeatability	0.05 %
Response time	0.25 s
External leadwire resistance effect	± 0.002 %/ohm typical max. 50 ohm / wire
Supply voltage range	12..40 VDC, reverse polarity protected
Output	4..20 mA
Min. output	3.8 mA
Current limitation	27 mA
Sensor current	0.7 mA
Operating temperature	0..55 °C
Storage temperature	-10..+70 °C

Module width	22.5 mm
Housing	polycarbonate, IP10
Weight	200 g
Temperature range	-200..+800°C
Min. span	50°C
Max. span	800°C

How to order

Model **620S - Pt100 - 0 / 200**

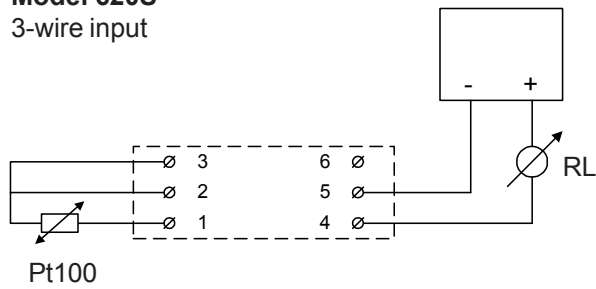
Sensor _____
Output 4 mA (°C) _____
Output 20 mA (°C) _____

For example, range 0-100°C, type 620S-Pt100-0/100

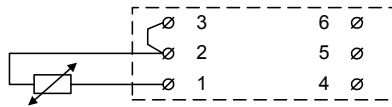
Wall and DIN 46277 rail mountings
Terminal board for 2 x 1.5 mm²

Connection diagram

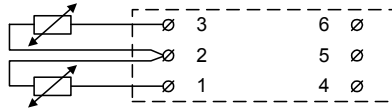
Model 620S
3-wire input



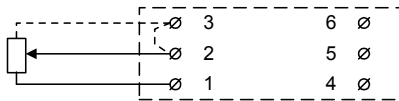
2-wire input



Difference measurement (special order)

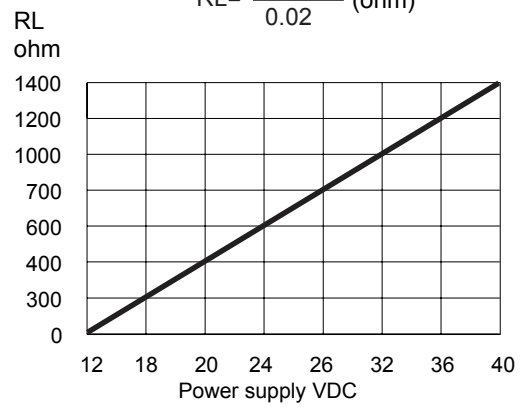


Potentiometer (special order)

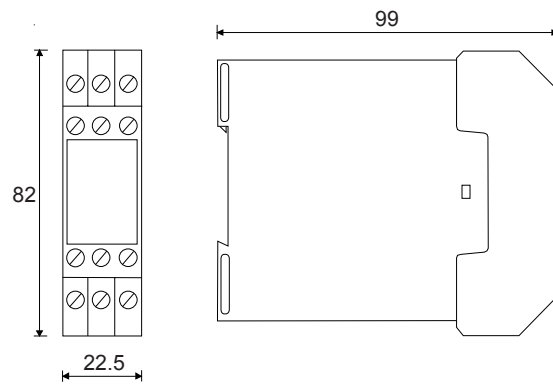


Max. loop resistance RL

$$RL = \frac{+V - 12}{0.02} \text{ (ohm)}$$



Dimensions



Connectors 2 x 2.5 mm
Mounting DIN 46277